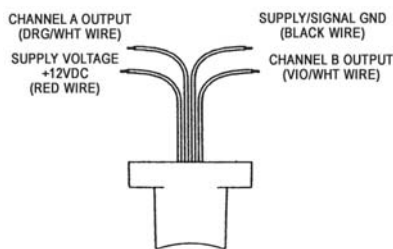




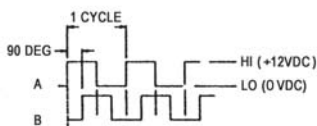
The Ring Kit Encoder counts motor revolutions and is mounted between the C-face motor and motor mounting flange. With 60 pulses per motor revolution, the ring kit offers a high pulse count relative to actuator travel. A small junction box with NPT opening is attached to the ring, allowing easy, protected electrical connections. Available for all sizes of NEMA C flanges used on Duff-Norton motorized screw and nut systems. Additional output types available. Contact Duff-Norton Application Engineering for specifics.

Specifications

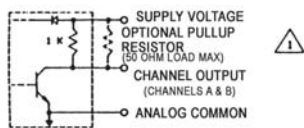
| | |
|--------------------------------|----------------------------------|
| Sensor Type | Bidirectional shaft speed sensor |
| Pulse Per Revolution | 60 cycles each channel |
| Supply Voltage | +12 Volts DC +/-5% |
| Supply Current | 60 mA typical (115 mA maximum) |
| Output Drive Capability | 250 mA per channel continuous |
| Maximum Load | 50 ohms per channel |
| Frame Sizes | 56C, 182C |



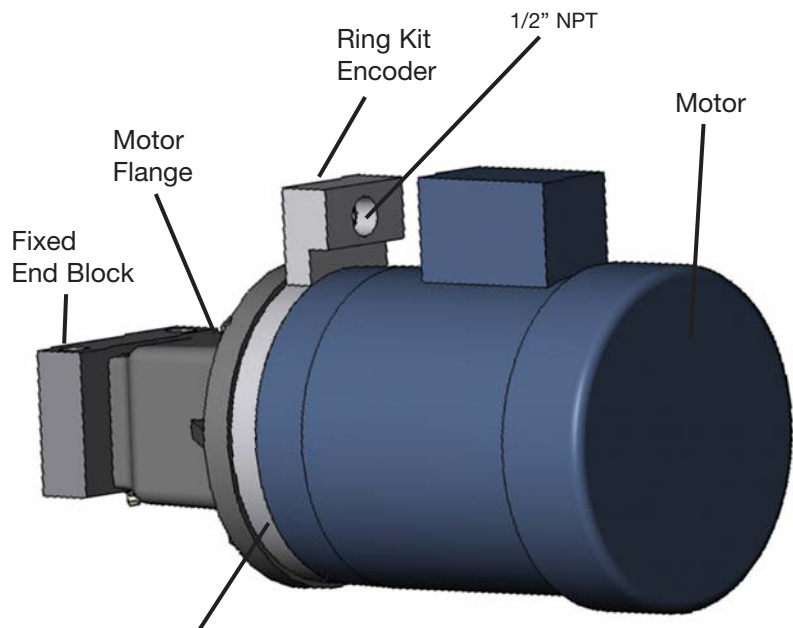
Electrical Connections



Output Channel Waveforms



Output Channel Schematic (Channels A & B)



Programmable Digital Position Indicator for Duff-Norton Encoders

Displays position of acme or ball nuts in increments of up to .001", depending on PPR (Accuracy is relative to ratio and backlash. Please consult factory for details).

Features

- Five digit input scaling with 0.0000 to +/- 5.0000, programmable decimal point location and lead zero blanking.
- Two adjustable up/down output limits with 0 to +/- 999999.
- Non-volatile E2-PROM Memory retains all programmed information and count value in event of power interruption.
- Input power requirement is 115/230 VAC, 50/60 Hz.
- Can be provided with optional 20 ma. current loop to provide capability of 2-way digital communication.
- On-line self-test permits complete check of all functions and reset capability allows reset to zero from front panel.
- Compact, die cast NEMA 4 rated front panel has six digit LED display with 0.56" high characters and negative sign (-). Display convertible to English, metric or other units of measurement.
- Field Programmable front panel functions may be locked out to prevent unauthorized adjustment.
- For use in precision positioning applications with Duff-Norton acme or ball screw systems.

The Duff-Norton SK10006-35 Digital Position Indicator provides a high degree of accuracy and versatility when incorporated in acme or ball screw systems. Operating as a revolution counter, it is ideal for use in a wide range of precision positioning applications to indicate inches or millimeters of lifting screw travel. Two built-in relays act as limit switches for travel limit control. Start-up/shut-off, audio/visual warning, multiple screw system sequencing or the initiation of subsequent operations may also be controlled. Electrical connections are made at the rear of the unit to UL recognized terminal strips. Clamp-type pressure plate terminals accept AWG-14 wire without lugs.

