

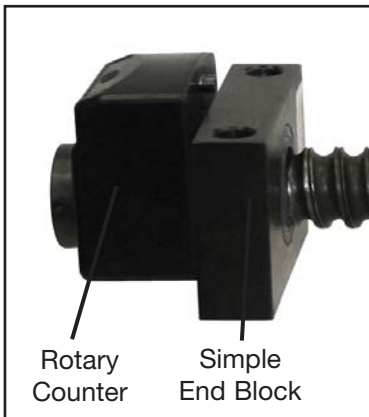
The Duff-Norton Rotary Counter is for customers who are looking for an easy way to determine an acme or ball nuts' position along the screw. Our counter ratios have been designed to match the most common screw leads. An operator viewing the reading in the display window will know the nuts' approximate position because the counter's display shows stroke to the nearest 1000ths of an inch up to 99 inches of travel. Custom numeric displays are also available.



Features

Some of the more important features are:

- Display readings have been pre-matched to the screw lead.
- Display reading has been extended to the nearest 1000ths of an inch.
- Clockwise and counter clockwise models available.
- Easy mounting kits available.



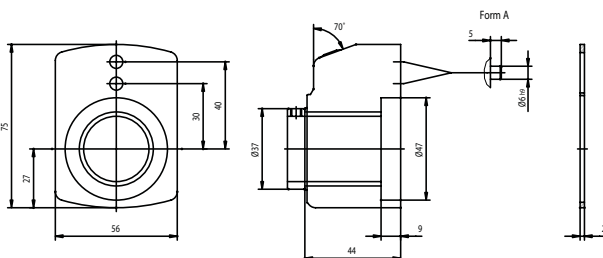
Note: Rotary Counters and Hand Wheels can be mounted on the same screw end. See page 78 for details.

Rotary Counter Performance Specifications

Model#	Turns Per Inch	Acme & Ball Screw Leads (In)
Clockwise rotation		
RC01R	1	1.00
RC02R	2	.500
RC04R	4	.250
RC05R	5	.200
RC10R	10	.100
Counter clockwise rotation		
RC01L	1	1.00
RC02L	2	.500
RC04L	4	.250
RC05L	5	.200
RC10L	10	.100

*Contact our Customer Service for screw leads which are not even T.P.I.

Rotary Counter Dimensions



Note: All dimensions in millimeters

Rotary Counters – Mounting Information

The Duff-Norton Rotary Counter fits over one of the screws Journal Ends with drive extension. A special bushing fills dimensional difference between the counters' bore and the journal ends drive diameter (see table). The user should make provisions to provide some mechanism to prevent the counter from rotating along the screw's shaft

Installation Information

Bushing #	Acme Screw & Lead	Ball Screw & Lead	Journal End Size
BU10-.313	0.5 - all*	0.5 - all*	Type 1A - Drive End Size 00
BU10-.406	0.63 - all*, 0.75 - all*	0.63 - all*	Type 1A - Drive End Size 01
BU10-.562	1 - all*	0.75 - all*	Type 1A - Drive End Size 03
BU10-.625	1 x .100	1 - all*	Type 1A - Drive End Size 04
BU10-.875	-	1.5 - all*	Type 1A - Drive End Size 05
BU10-1.00	1.5 - all*	-	Type 1A - Drive End Size 06

All leads for that diameter screw except where noted