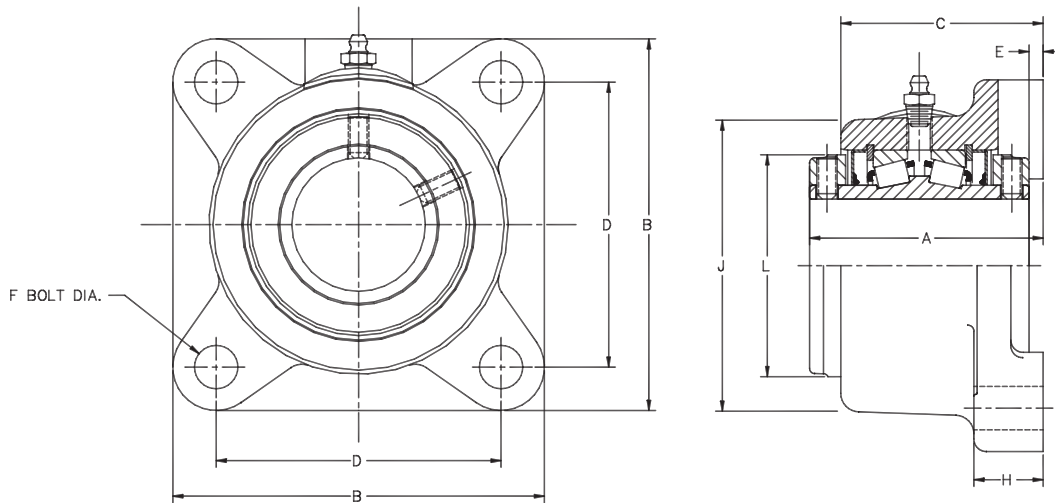


Duff-Norton provides a wide assortment of Flange Blocks designed to operate with our screw and nut systems. Flange Blocks lock on to the end of the screw, and can then be bolted on to the machine or fixture. This simple screw support ensures that the load being carried by the acme or ball nut is properly guided.



Features

- Double row tapered roller bearings.
- ASTM A48 Class 30 Iron with tensile strength of at least 30,000psi.
- Dust seals.
- Set-screw locks – to properly secure screws or shafts regardless of rotation direction.



Flange Block Dimensional Specifications

Screw Diameter	Duff Part#	Shaft Size (In)	# Base Holes	A	B	C	D	E	F Bolt Dia	H	J	L	Weight
3.00	FB250	2.50	4	4	6-7/8	3-9/16	5-3/8	3/16	5/8	1-1/2	5-5/16	4-1/16	19
3.75	FB300	3.00	4	4-1/2	7-3/4	3-15/16	6	3/16	3/4	1-5/8	6	4-23/32	26
4.00	FB325	3.25	4	5	9-1/4	4-1/2	7	1/4	3/4	1-7/8	7-1/4	5-1/2	51
4.50	FB350	3.50	4	5	9-1/4	4-1/2	7	1/4	3/4	1-7/8	7-1/4	5-1/2	50
5.00	FB400	4.00	4	6-1/4	10-1/4	5-5/8	7-3/4	1/4	7/8	2-1/8	8-1/4	6	75

Note: Flange blocks are suited to function as Simple End supports only, not as thrust load bearings. All sizes use a 1/8-27 NPT hydraulic grease fitting.