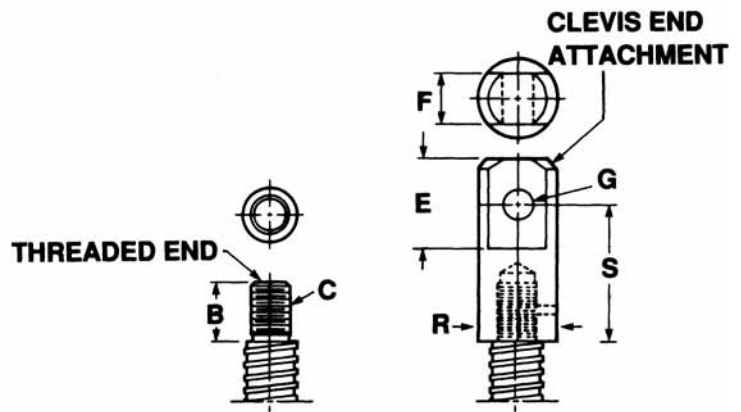


For certain applications it may be desirable to rotate the acme or ball nut around a non-rotating and firmly fixed screw. Duff-Norton provides standard End Plates and Clevis Ends attachments for such applications.

## Features

Some of the more important features are:

- Fabricated to common ANSI standard dimensions.
- Drilled and Tapped for common UN Threaded Screws
- Set-screw drilled, with hardware provided
- Readily available for most Acme & Ball Screws



## Clevis End Dimensions

Acme Screw & Lead	Ball Screw & Lead	Clevis End #	B	C	Dimensions (inches)			
					E	F	G	R
.50 X .250 & .500	.500 - all	SK2800-4-29A	3/4	3/8"-24-UNF-2A	1	1/2	5/16"+.007/-0.000	3/4
.63 & .75 - all	.631 - all	SK2800-4-29A	3/4	3/8"-24-UNF-2A	1	1/2	5/16"+.007/-0.000	3/4
1 X .250, .500 & 1.00	.750 - all	SK28750-8A	3/4	1/2"-13UNC-2A	3/4	1/2	5/16"+.007/-0.000	1 1/4
1 X .100 & .200	1.00 - all	SK2800-4-2A	1 1/8	3/4"-16-UNF-2A	1 1/2	1	1/2" +.008/-0.000	1 1/2
-	1.17	SK2800-4-2A	1 1/8	3/4"-16-UNF-2A	1 1/2	1	1/2" +.008/-0.000	1 1/2
1.50 - all	1.50 - all	SK2800-4-5A	1 1/8	1"-14-UNS-2A	2 1/2	1 1/4	3/4" +.010/-0.000	1 3/4
2.00 - all, 2.25 X .500	2.00 - all	SK2800-4-10A	1 1/8	1"-14-UNS-2A	2 1/2	1 1/2	1" +.010/-0.000	2
2.25 X .250	2.25 - all	SK2800-4-20A	2 1/4	1 3/4"-12-UN-2A	3	1 3/4	1 1/4" +.010/-0.000	2 5/8
2.50 - all	-	SK2800-4-20A	2 1/4	1 3/4"-12-UN-2A	3	1 3/4	1 1/4" +.010/-0.000	2 5/8
3.00 - all	3.00	SK2800-4-25A	2 1/4	2 1/4"-12-UN-2A	5	2 3/4	1 1/2" +.010/-0.000	3 1/2
3.75 - all	4.00	SK2800-4-60A	2 3/4	3 1/4"-12-UN-2A	5 1/4	3 3/4	2" +.012/-0.000	5

\*Note - some of the smaller diameter acme screws have root diameters too small to engage with the End Plate