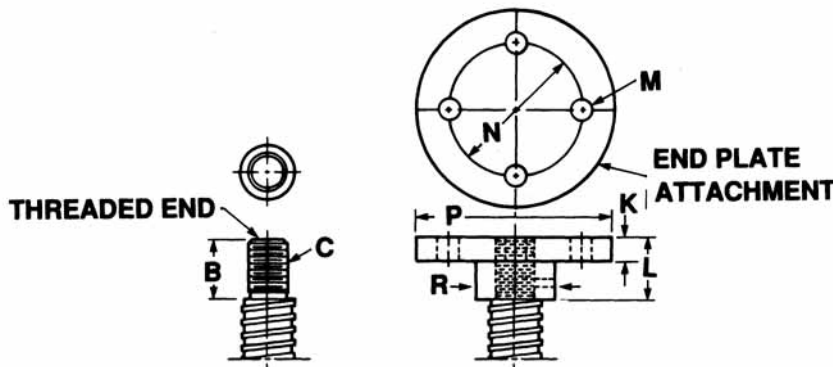




NOTE: During installation it is necessary to thread the End Plate or Clevis End into its position, then drill through the tapped hole and to penetrate the screw's surface. When the attachment is in place, this will ensure that the supplied set-screw properly engages both the attachment and Acme or Ball Screw.



End Plate Dimensions

| Acme Screw & Lead | Ball Screw & Lead | End Plate # | Dimensions (inches) | | | | | | | |
|-------------------------|-------------------|--------------|---------------------|-----------------|-------|---------|-------|-------|-------|-------|
| | | | B | C | K | L | M | N | P | R |
| .50 X .250 & .500 | .500 - all | SK2800-1-29A | 3/4 | 3/8"-24-UNF-2A | 5/16 | 13/16 | 9/32 | 1 1/2 | 2 1/4 | 3/4 |
| .63 & .75 - all | .631 - all | SK2800-1-29A | 3/4 | 3/8"-24-UNF-2A | 5/16 | 13/16 | 9/32 | 1 1/2 | 2 1/4 | 3/4 |
| 1 X .250, .500 & 1.00 | .750 - all | SK28750-1A | 3/4 | 1/2"-13UNC-2A | 3/8 | 4/5 | 7/16 | 2 1/2 | 3 1/2 | 1 1/4 |
| 1 X .100 & .200 | 1.00 - all | SK2800-1-2A | 1 1/8 | 3/4"-16-UNF-2A | 7/16 | 1 3/16 | 13/32 | 3 | 4 1/4 | 1 1/2 |
| - | 1.17 | SK2800-1-2A | 1 1/8 | 3/4"-16-UNF-2A | 7/16 | 1 3/16 | 13/32 | 3 | 4 1/4 | 1 1/2 |
| 1.50 - all | 1.50 - all | SK2800-1-5A | 1 1/8 | 1"-14-UNS-2A | 5/8 | 1 1/4 | 11/16 | 3 1/2 | 5 | 1 3/4 |
| 2.00 - all, 2.25 X .500 | 2.00 - all | SK2800-1-10A | 1 1/8 | 1"-14-UNS-2A | 3/4 | 1 3/8 | 13/16 | 4 1/8 | 5 3/4 | 2 |
| 2.25 X .250 | 2.25 - all | SK2800-1-20A | 2 1/4 | 1 3/4"-12-UN-2A | 1 | 2 5/16 | 13/16 | 5 | 7 | 2 5/8 |
| 2.50 - all | - | SK2800-1-20A | 2 1/4 | 1 3/4"-12-UN-2A | 1 | 2 5/16 | 13/16 | 5 | 7 | 2 5/8 |
| 3.00 - all | 3.00 | SK2800-1-25A | 2 1/4 | 2 1/4"-12-UN-2A | 1 | 2 5/16 | 1 1/6 | 6 | 8 1/2 | 3 1/2 |
| 3.75 - all | 4.00 | SK2800-1-60A | 2 3/4 | 3 1/4"-12-UN-2A | 1 3/8 | 2 13/16 | 1 1/2 | 10 | 13 | 5 |

*Note - some of the smaller diameter acme screws have root diameters too small to engage with the End Plate