

1300 SERIES

FLANGED SWIVEL



Operating Parameters

MEDIA	PRESSURE*
Water, Air	290 PSI
TEMPERATURE*	SPEED*
392° F	Swivel
MATERIAL	CONNECTION TYPE
Nickel Plated Steel	2" to 12" Flange

* See Performance Charts For Details

Features & Benefits

Swivel Applications

Used in applications where slow rotation or swiveling motion is needed.

GR Seal Technology

Design features include a ball bearing for rotation, and a GR seal for superior sealing performance.

Flanged Swivel Design

Allows for stability in high flow applications.

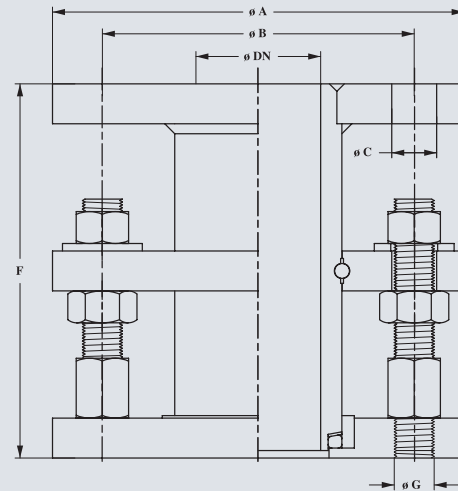
High Temperature Applications

Can be used in applications with temperatures up to 392° F.

1300 SERIES FLANGED SWIVELS

PART NUMBERS	1300 SERIES FLANGED SWIVELS				
	Nominal Pipe Size	Nickel Plated Steel		Stainless Steel	
		Part Number	Description	Part Number	Description
	2	760572C	BR50K	760582C	BR50I
	2-1/2	760573C	BR66K	760583C	BR66I
	3	760574C	BR80K	760584C	BR80I
	4	760575C	BR100K	760585C	BR100I
	5	760576C	BR125K	760586C	BR125I
	6	760577C	BR150K	760587C	BR150I
	8	760579C	BR200K	760589C	BR200I
	10	760580C	BR250K	760590C	BR250I
	12	760581C	BR300K	760591C	BR300I

1300 SERIES FLANGED SWIVEL (in.)								
DIMENSIONS	Nominal Pipe Size	Number of Holes	Overall Diameter (A)	B	Slot C	DN	Overall Length (F)	Thread (G)
	2	4	6.49	4.92	.70	2	5.90	4 x .70
	2-1/2	4	7.28	5.70	.70	2-1/2	5.90	4 x .70
	3	8	7.87	6.29	.70	3	5.90	4 x .70 4 x M16
	4	8	8.66	7.08	.70	4	5.90	8 x .70
	5	8	9.84	8.26	.70	5	5.90	8 x .70
	6	8	11.22	9.44	.86	6	5.90	8 x .86
	8	8	13.38	11.60	.86	8	7.87	8 x .86
	10	12	15.55	13.77	.86	10	7.87	12 x .86
12	12	17.50	15.70	.86	12	7.87	12 x .86	



Performance Charts

